

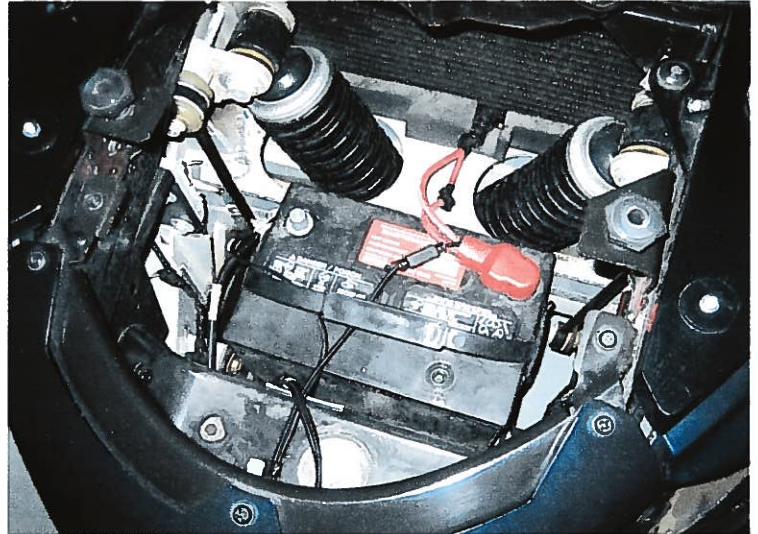
## **INTRODUCTION:**

These instructions are compiled from the Prowler Service Manual, 1BUDDYC recommendations, and user experience. Read these *entire* instructions before proceeding. When in doubt, always refer back to the service manual or contact your local Dodge/Chrysler/Jeep service center for assistance.

## **STEERING WHEEL REMOVAL:**

(1) Position the front wheels of the vehicle so that they are in the straight ahead position and the steering wheel is straight with the "T" spokes level.

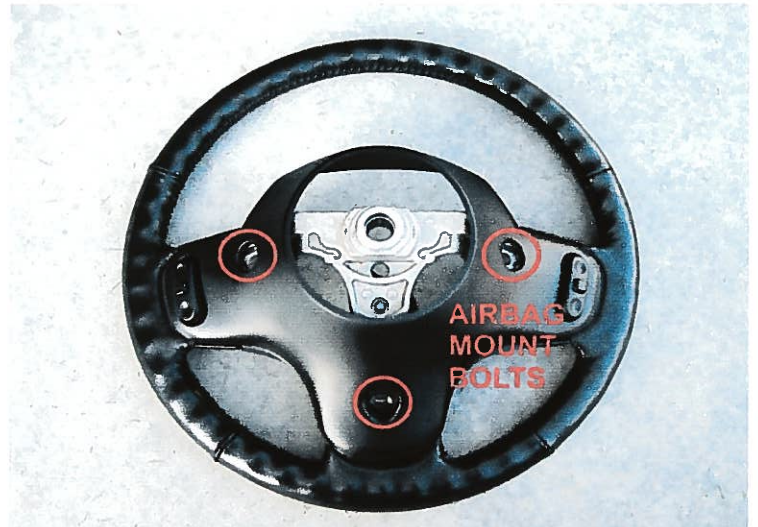
(2) Remove the ground cable (-) from the negative post of the battery (Fig. 1). Take steps to ensure that the cable is isolated from the battery and there is no chance of the cable coming in contact with the battery terminal.



**Fig. 1 - Disconnecting and isolating the ground cable.**

**CAUTION:** Wait for a minimum of 2 minutes before attempting to remove the airbag from the steering wheel. This will allow the airbag system capacitor time to de-energize, minimizing the chances of the airbag accidentally deploying.

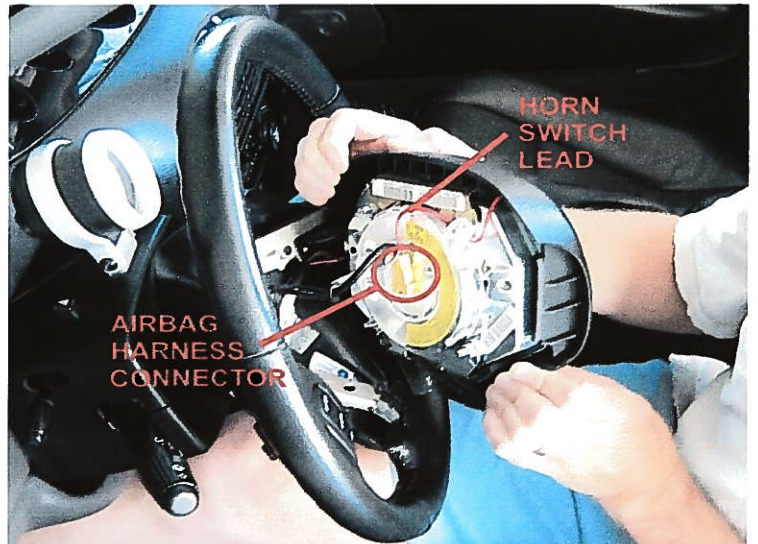
**WARNING:** Observe the following precautions when handling the airbag. At no time should any source of electricity be permitted near the inflator on the back of the airbag module. When carrying a live module, the trim cover should be pointed away from the body to minimize injury should the module accidentally deploy. If the airbag module is placed on a bench or other surface, the plastic trim cover should be face up to minimize movement in case of accidental deployment.



**Fig. 2 - Airbag module mount bolt locations.**

(3) Remove the airbag module from the steering wheel. The airbag module is mounted to the steering wheel by a bolt located in each spoke of the steering wheel. Access to the mounting bolts is from the back side of each steering wheel spoke (Fig. 2).

(4) Disconnect the airbag wiring harness connector from the back of the airbag module. Then disconnect the wire lead for the horn switch lead on the airbag module (Fig. 3).



**Fig. 3 - Airbag module connections.**

(4, continued) Lastly, disconnect the steering column harness from the cruise control / radio control harness on the steering wheel (Fig. 4).

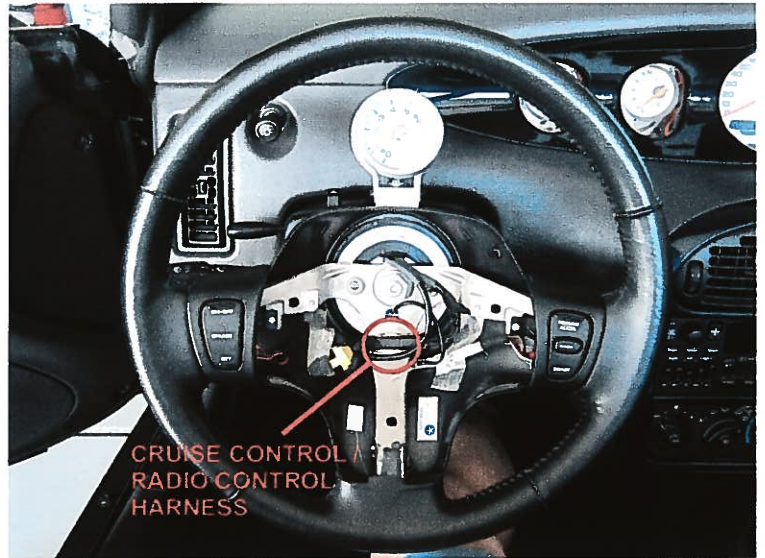


Fig. 4 - Cruise Control / Radio Control Harness Plug.

(5) Remove the steering wheel retaining nut. The use of an air-impact wrench is highly recommended (Fig. 5). The "shock" provided by an air-impact wrench will make loosening of a seized or over-tightened retaining nut easier.

**CAUTION:** Once the retaining nut has been removed, screw it back on to the steering column shaft a few turns by hand. This will prevent damage to the threads when using the steering wheel puller to remove the steering wheel (next step). However, if your steering wheel puller includes a pointed center shaft, reinstalling the retaining nut may not be necessary since the puller's center shaft will engage the depression on the steering column shaft.



Fig. 5 - Cruise Control / Radio Control Harness Plug.

(6) Install a steering wheel puller onto the steering wheel and slowly tighten it to draw the steering wheel off the steering column shaft (Fig. 6). An air-impact gun is recommended for running the steering wheel puller down and removing the steering wheel. Since the steering wheel is a taper fit, the "shock" from the impact gun should make the steering wheel easier to remove.

**CAUTION:** When installing the puller, ensure to "bottom-out" the attaching bolts when installing them into the threaded holes of the steering wheel. If the bolts are not fully installed, the threads may be pulled out of the steering wheel as the puller is tightened.

**CAUTION:** Do not bump or hammer on the steering wheel or the steering column shaft when attempting to remove the steering wheel. The shaft is tapered and hammering on it can cause it to mushroom or distort, making removal of the steering wheel much more difficult. Also, never apply heat to the steering wheel or steering column shaft.



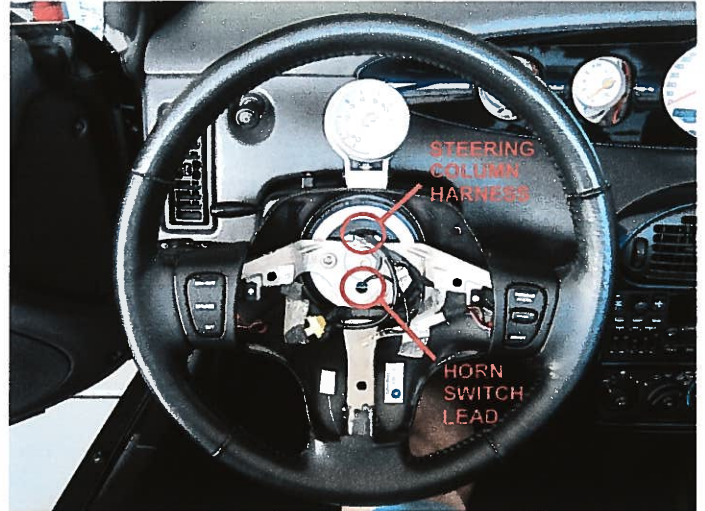
Fig. 6 - Use the steering wheel puller to draw the steering wheel off the steering column shaft..

Once you have your old steering wheel removed, set it on your work bench next to your new steering wheel. You'll see 2 phillips screws that hold the cruise switches to the radio switch housing. Remove the screws and transfer the radio switch housing and the cruise switches to the new steering wheel. There also is a "butterfly" wire retainer attached to the bottom center spoke of your old steering wheel that holds the wiring in place. Remove this from the original steering wheel with a pair of needle nose pliers by pinching the "wings" and popping it out from the front. Install the retainer on the new steering wheel by pushing it in front the front.

### **STEERING WHEEL INSTALLATION:**

Installing the steering wheel is generally the reverse of the procedure to remove it. However, there are some general cautions and steps to observe.

(1) Feed the steering column wiring harnesses for the airbag and the steering wheel cruise control / audio control harness over the top of the steering wheel "T" spokes. Feed the horn switch wire through the hole in the steering wheel below the steering column shaft (Fig. 7).



**Fig. 7 - Steering wheel installation.**

(2) Position the steering wheel onto the shaft of the steering column, making sure to fit flat on the hub of the steering wheel with the formations on the clockspring.

**CAUTION:** Do not install the steering wheel onto the steering column shaft by driving it on with a hammer. Push the steering wheel down onto the column shaft splines by hand, paying attention to the master spline. Then draw it into place using the steering wheel retaining nut.

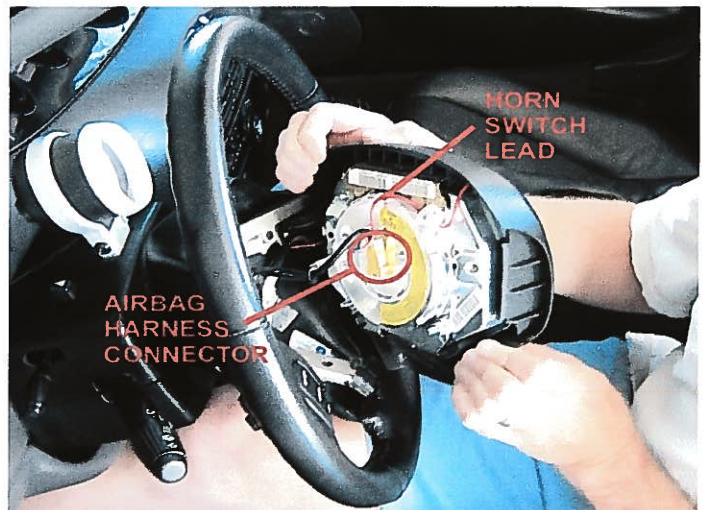


**Fig. 8 - Installing the steering wheel retaining nut.**

(3) Install the steering wheel retaining nut and tighten until steering wheel is fully installed on the steering column shaft. An air impact hammer will help to fully seat the steering wheel onto the column shaft (Fig. 8). Then tighten steering wheel nut to a torque of 45 ft. lbs.

(4) Connect the appropriate steering column wiring harness to the cruise control / audio control wiring harness on the steering wheel. Slide and lock the connector plug onto the plastic butterfly retainer.

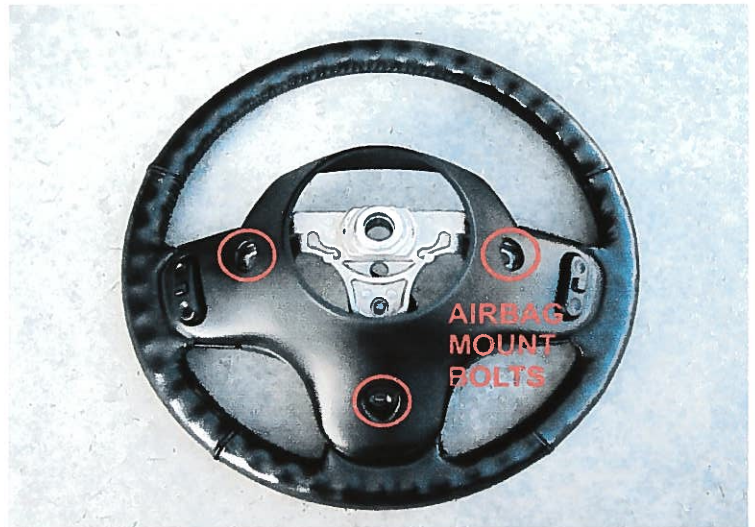
(5) Connect the appropriate steering column wiring harness to the to the air bag module. Reconnect the horn switch lead (Fig. 9). Once all connections have been made, position the air bag module onto the steering wheel.



**Fig. 9 - Reconnecting the airbag and horn switch lead.**

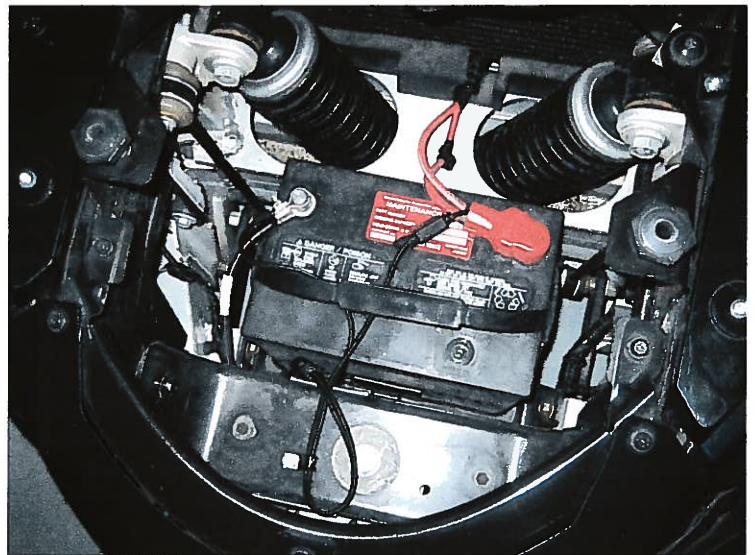
**CAUTION:** The fasteners, screws, and bolts originally used for the airbag components are specifically designed for the airbag system. They must not be replaced with any substitutes. Anytime a new fastener is needed, replace it only with the correct fasteners provided by your Dodge/Chrysler/Jeep parts dealer.

(6) Install the airbag module onto the steering wheel. **Install original or correct replacement** attachment bolts (Fig. 10). Tighten the attaching bolts firmly, being careful not to over-tighten them. Factory specifications call for a torque of 90 in. lbs.



**Fig. 10 - Airbag module mount bolt locations.**

(7) Reconnect the car's ground cable to the negative terminal of the battery (Fig 11).



**Fig. 11 - Reconnecting the ground cable.**