

PROWLER SPOILER INSTALLATION INSTRUCTIONS

Spoiler Introduction

Our new Prowler Spoiler is of the same design as the very popular TGF spoiler that is no longer available. The differences are that our spoiler is made of hand laid fiberglass with a black jell coated finish. The spoiler has been raised up so the factory third brake light sets under the spoiler. The spoiler comes with a 12" long, 90 LED recessed brake light. The spoiler also comes without a LED light for those who want to use the factory brake light only. A TGF styled black jell coated blanking plate for the factory third brake light is available.

The spoiler is designed to set back approximately 1/8" from the door jam and is bolted with a 1/4"-20 bolt on each side. Following the installation procedure insures that the spoiler will work well with the factory top and current hardtops available. Our spoiler will also work with the Air Patrol with a number of installation options. The spoiler has a 1/4"-20 nut in the spoiler mounting surface so the spoiler can be moved back 2' from the door jam. This will allow the spoiler to clear the Air Patrol mounting surfaces. A 1/2" wide strip of foam tape on the spoiler mounting surface may be necessary to insure a good fit with the rear deck lid. Other options are to notch the spoiler mounting surface or the Air Patrol mounting surface. Enjoy your Spoiler and let us know your thoughts.

IT IS RECOMMENDED THAT YOU COMPLETE THE INSTALLATION OF THE SPOILER ON YOUR PROWLER BEFORE IT IS PAINTED SO AS NOT TO DAMAGE THE PAINT DURING THE INSTALLATION PROCEDURE. THEN REMOVE THE SPOILER AND HAVE IT PAINTED.

1. Using painters blue tape cover the area on both sides of the Prowler where the spoiler will mount, figure 1.
2. Draw a line 1/8" back from door jam, both sides, as shown in figure 2.
3. Set the spoiler on the Prowler with the front edge of the spoiler on the line drawn in step 2, both sides, figure 3. Insure the spoiler is centered by measuring the distance the spoiler is from the convertible top. The distance should be the same on both sides, figure 4. This is where the spoiler will be mounted when complete. Insure that the spoiler fits well on the rear dick lid and that there is no gap around the mounting surface.
4. Draw a line around the spoiler mounting surface on both sides as shown in figures

- 5 and 6. Remove the spoiler from the Prowler.
5. Cut out the mounting patterns provided, figure 7. Lay them against the spoiler mounting surface to insure proper size. Make sure you place the proper pattern on each mounting surface.
 6. Using a scribe or similar tool poke a hole in the patterns where the 5/16" mounting hole is identified. If you have purchased a spoiler with the LED light also poke a hole in the passenger side pattern where the 1/2" LED cable hole is indicated.
 7. Place in position the patterns on their respective outlines on the Prowler rear deck lid, figure 8. Holding the patterns in position use a permanent marker to mark the spot of the 5/16" mounting holes. If you are using the LED light also mark the 1/2" LED cable hole, figure 9. Review figures 10 and 11 to insure mounting holes are in the proper location.
 8. Remove the rear deck lid inside liner by removing the plastic mounting tabs using the tool in figure 12.
 9. Using a 1/8" drill bit, drill a pilot hole for each of the two 5/16" mounting holes and the 1/2" LED cable hole when used. Look at the under side of the rear deck lid and verify that the holes are at the same location as those in figure 13.
 10. Using a 5/16" drill bit, drill the two 5/16" mounting holes. Use a 1/2" drill bit to drill the LED cable hole when used.
 11. Before removing the blue tape from your Prowler it is recommended that you install the spoiler to insure proper fit. Use the two 1/4-20 bolts, washers, and star lock washers to secure the spoiler to the Prowler. After you are satisfied with everything have the spoiler painted.

If you are using a LED light, send the light strip along with the spoiler to the paint shop to insure that it will fit into the spoiler groove after the spoiler is painted.

Before sending the parts to the paint shop verify that the LED light works properly by connecting it across the positive terminal, red wire, and the negative terminal, black wire, of a 12VDC car battery.

Completing the Installation

11. After the return of the spoiler from paint install the LED light, if used, in accordance with the LED Installation Instruction.
12. The spoiler is supplied with clear polyethylene tape to protect the deck lid surface or double back tape for those who want to use it. Install the blanking plate using the clear polyethylene tape if the factory third brake light is not used. Wipe the mounting surfaces on both the spoiler and the rear deck with rubbing alcohol to insure that the tape will stick properly. Apply the tape of choice to the spoiler, figure 14.

- 13.If you are using the LED light feed the light cable through the hole in the rear deck, figure 15. Mount the spoiler to the rear deck using the two bolts as recommended or with double back tape.
- 14.The LED light can be used in two different ways. If not using the factory third brake light connect the LED cable using the supplied connectors to the cable that was disconnected from the factory third brake light. It may be necessary to extend the length of one of the cables, figure 16. Connect red wire to white wire and black wire to black wire.
- 15.The LED light can also be used with the factory third brake light by splicing the LED cable into the factory brake light cable. Connect the red wire to the white wire and the black wire to the black wire.
- 16.Replace the rear inside deck liner and enjoy your spoiler.

Spoiler Installation

Figure 1

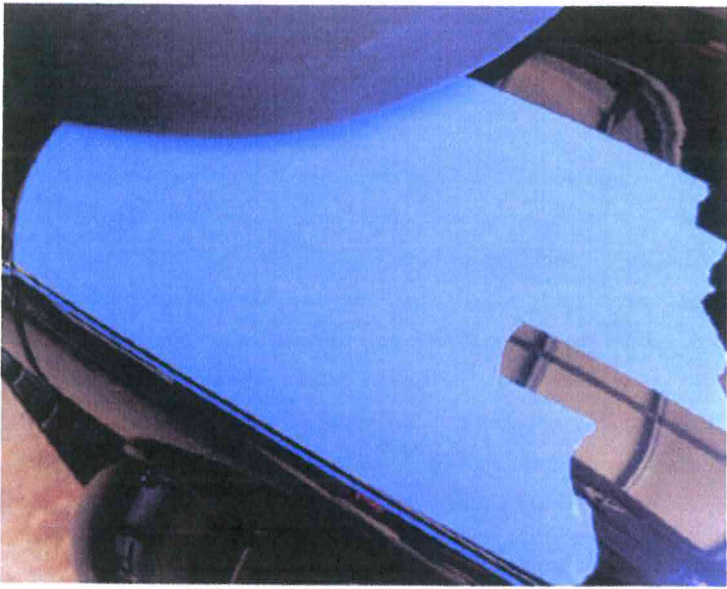


Figure 2

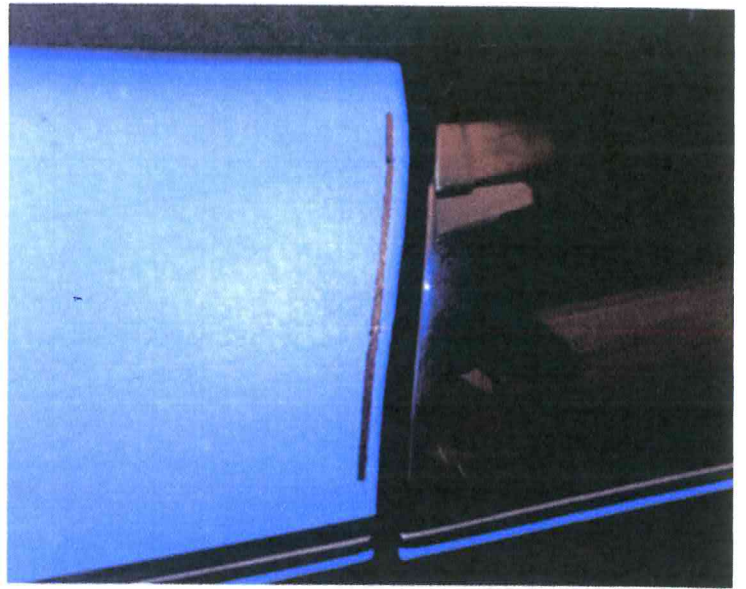


Figure 3



Figure 4

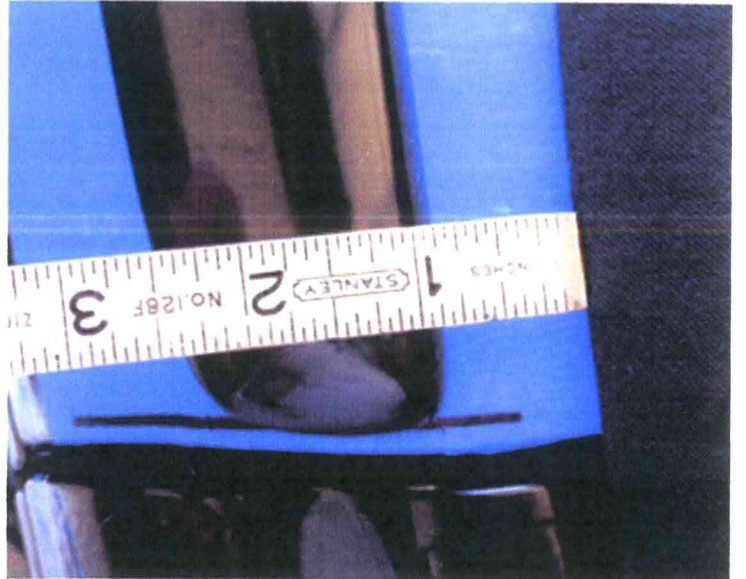
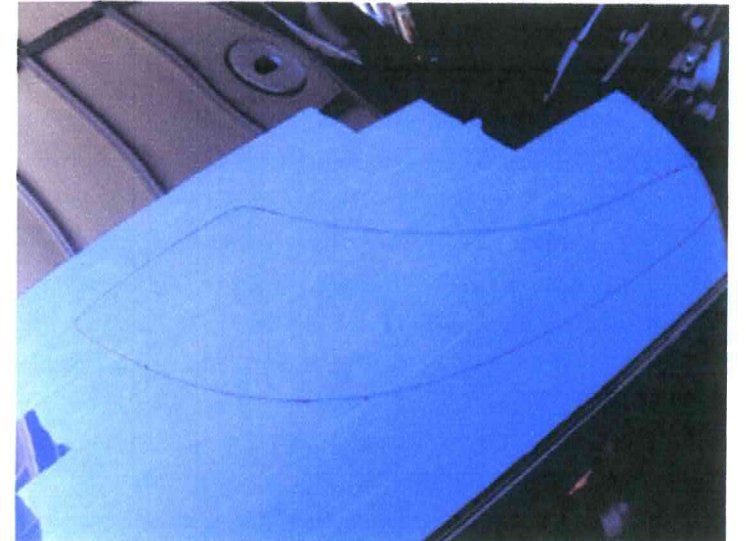


Figure 5



Figure 6



Spoiler Installation

Figure 7

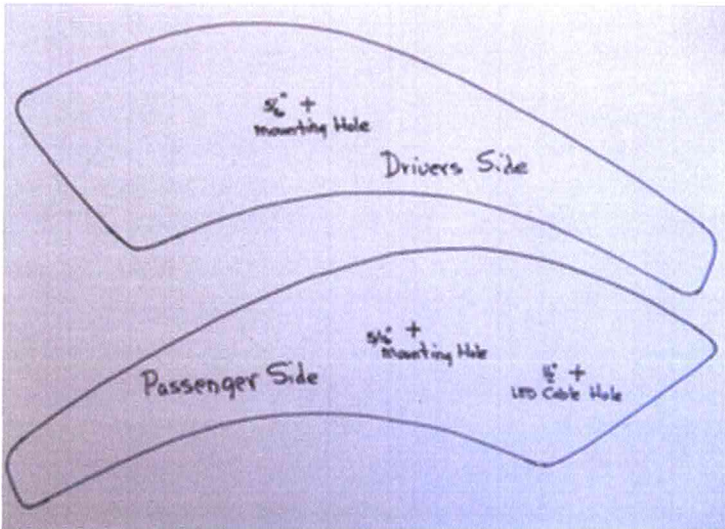


Figure 8

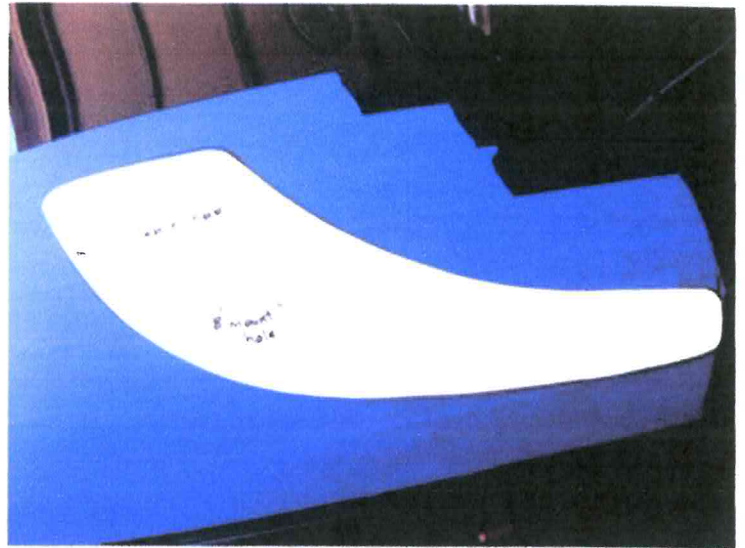


Figure 9

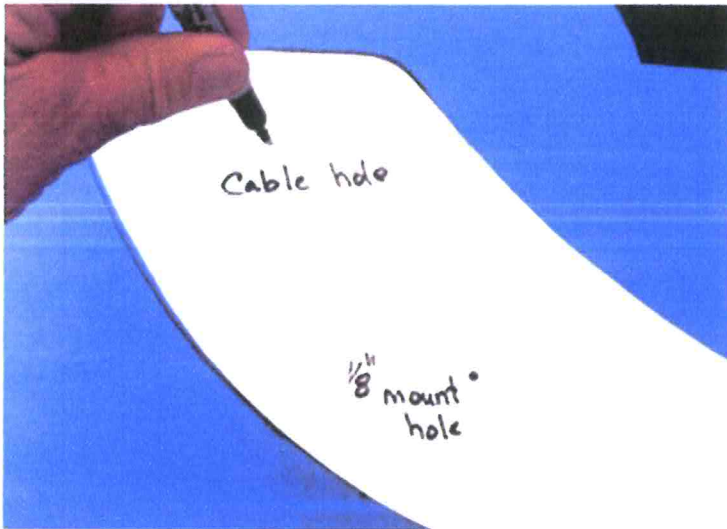


Figure 10

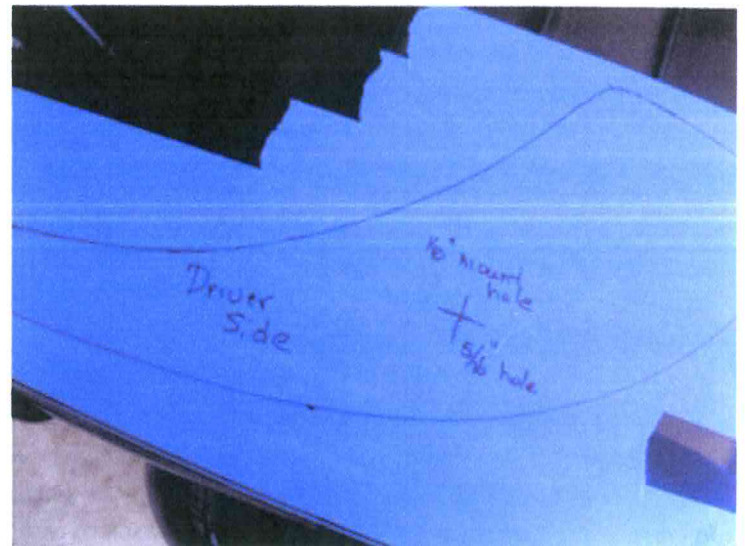


Figure 11

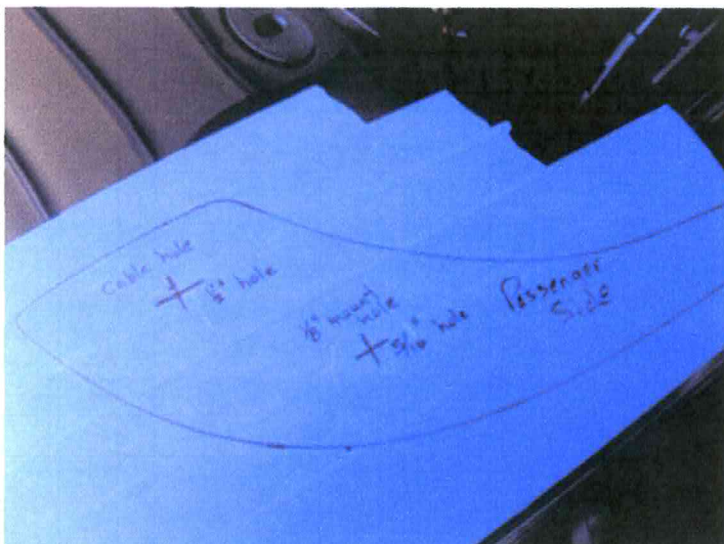
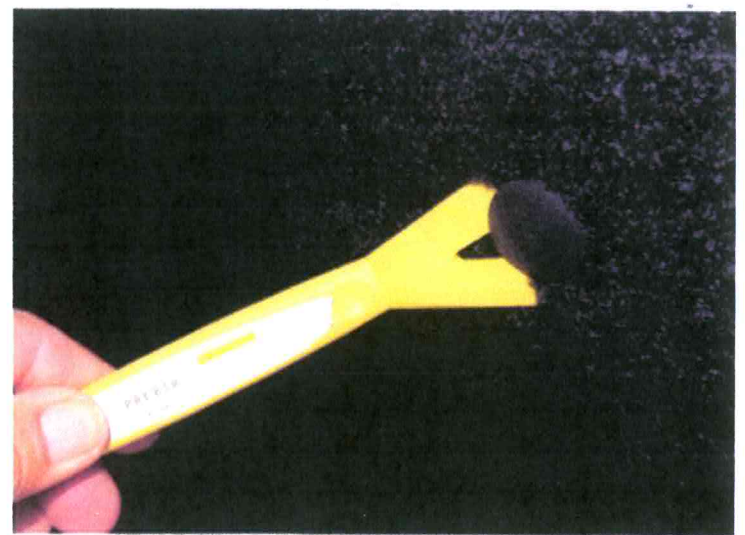


Figure 12



Spoiler Installation

Figure 13

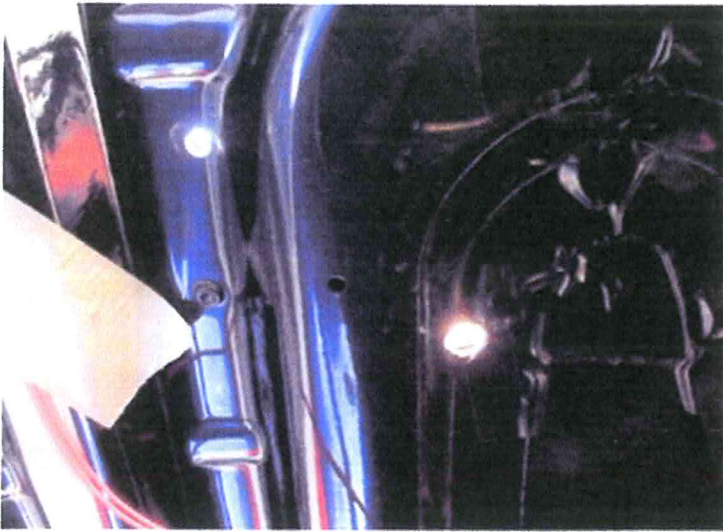


Figure 14

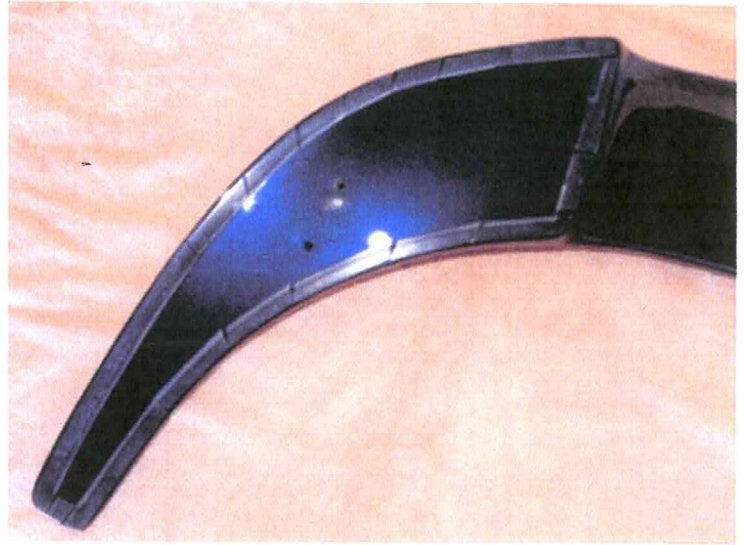


Figure 15

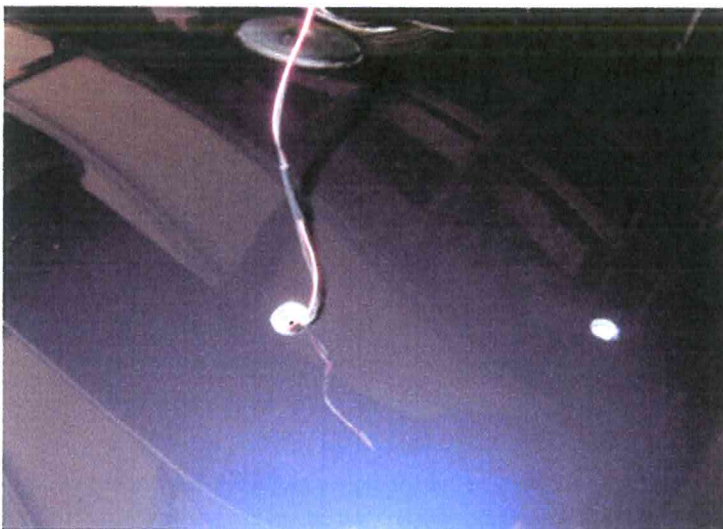
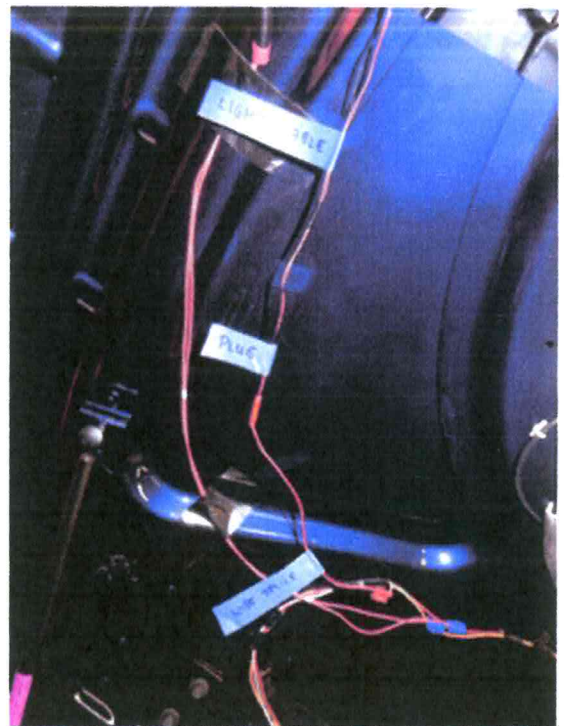


Figure 16



SPOILER LED INSTALLATION INSTRUCTIONS

Before installing the LED into the painted spoiler verify that the LED works properly by connecting it across the positive terminal, red wire, and the negative terminal, black wire, of a 12VDC car battery.

The LED light is attached to the spoiler with double backed tape. The LED can be removed but may be damaged when doing so. Replacement LEDs can be purchased.

1. It is very important that you send the LED to the paint shop with the spoiler to insure that the LED will fit the mounting groove when painting is completed. After paint it is recommended that you verify that the LED light fits into the spoiler mounting groove by feeding the two wires through the hole in the spoiler groove and placing the LED in the groove. See figures 1 and 2. Remove the LED light and wires from the spoiler.
2. For final installation of the LED into the painted spoiler feed a string with a small screw or something similar attached, through the hole in the mounting groove, figure 3, exiting the large hole in the drives side mounting surface, figure 4.
3. Tape the two wires from the LED to the string at the mounting groove entrance, figure 5 and pull the wires through the exit hole at the spoiler mounting surface, figure 6.
4. Wipe out the mounting groove for the LED with rubbing alcohol to insure that the double back tape will stick well. Remove the red film form the tape and install the LED.

LED Installation

Figure 1

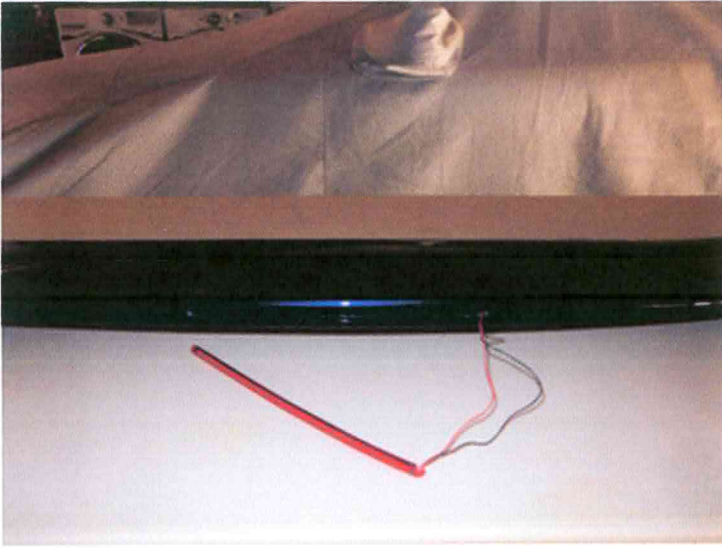


Figure 2



Figure 3

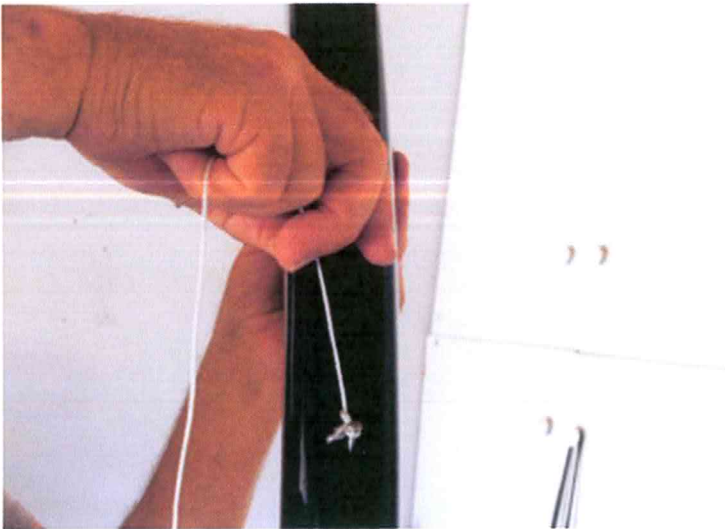


Figure 4



Figure 5

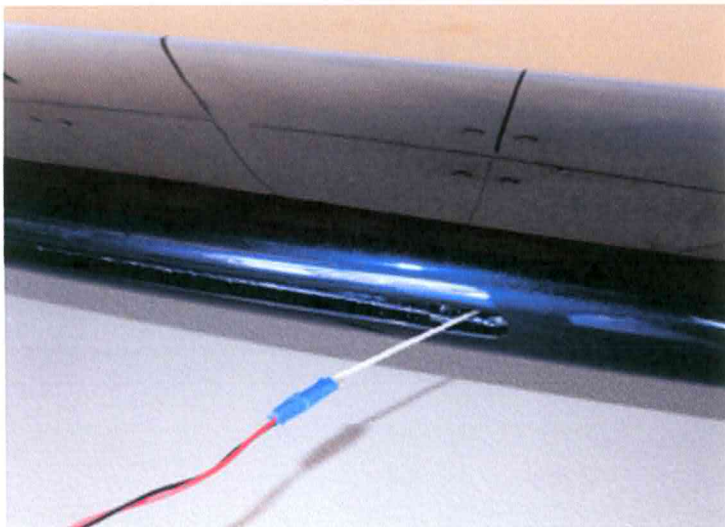


Figure 6

